

A∞LBERKEH

Tobacco





Toton Arya Middle East Company is the first producer with automatic equipments and official certificate from Irainian Tobbaco company in Iran. It was established in 2006.

This Company is focused on supplementing the growing demand for high quality, modern commercial with an emphasis on modern construction methods and energy efficient technologies in 5 sections include:

1. Tobacco cultivation
2. Tobacco processing
3. Molasses tobacco processing
4. Packaging Unit
5. Laboratory Unit

This company has worked up by using professional experts in QC and R&D sections. Our goal is to provide a good commercial relations in all over the world.

It is noteworthy, the company has vast farms for tobacco cultivation with high quality in north of Iran. We cultivate

Virginia Tobacco with various sugar and nicotine in high quality.

We produce types of molasses tobacco in more than 100 flavours with different weight and unique packaging.

We are proud of our roots as a Irainian company and we continually emphasize our obligitaion to develop the wealth of talent that exists in Iran in order to transfer the highest standards of knowledge, expertise and best practice to the Iranian workforce. Our client's satisfaction is paramount and we continually strive to ensure transparancy and professionalism in our drive towards successful project delivery.



Tobacco farm

A⁺ LBERKEH
Tobacco

Shisha



Shisha is a single- or multi-stemmed instrument for vaporizing and smoking flavored tobacco

Shisha smoking, also called narghile, water pipe, hookah or hubble bubble smoking, originates from the Middle East and certain areas of Asia, but has recently become more popular in the UK especially with young people. It is a way of smoking tobacco through a bowl with a hose or tube joined on. The tube has a mouthpiece that the smoker uses to breathe in the smoke.

Origin of Shisha



Comes from the north-west of India
from regions Rajasthan and Gujarat

A hookah (shisha) is shown against a dark background. It consists of a glass jar base filled with water, a bowl of tobacco on top, and a hose attached to the side. The tobacco is glowing, indicating it is being smoked. The hose is dark and extends from the top of the jar.

How does Shisha run ?

The jar at the bottom of the hookah is filled with water sufficient to submerge a few centimetres of the body tube, which is sealed tightly to it. Tobacco or tobacco-free molasses are placed inside the bowl at the top of the hookah, the bowl is covered with perforated tin foil or a metal screen and coal placed on top. When one inhales through the hose, air is pulled through the charcoal and into the bowl holding the tobacco. The hot air, heated by the charcoal vaporizes the tobacco without burning it. The vapour is passed down through the body tube that extends into the water in the jar. It bubbles up through the water, losing heat, and fills the top part of the jar, to which the hose is attached. The vapour goes through the hose and smoker smokes this flavoured vapour.

Shisha' Parts and Components

Charcoal



Molasses
Tobacco



Bowl / Head



Tray



Stem / Shank



Release Valve

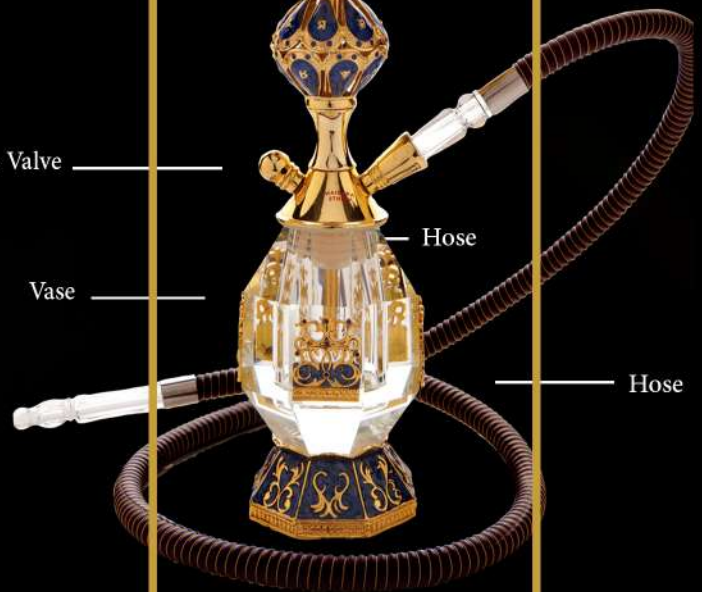


Hose

Vase



Hose





Molasses Tobacco

Molasses Tobacco is a tobacco mixed with molasses or honey that is used for Hookah smoking. Unlike the tobacco in cigars and cigarettes, which contains industrial chemicals and artificial additives, shisha is made of only natural substances and comes in a wide range of flavors. It is a syrupy tobacco blended with molasses and vegetable glycerol as moisturizer and specific flavors added to it. *Non-tobacco-based mu'assel is also available in certain areas where tobacco smoking is not allowed

How made Molasses Tobacco





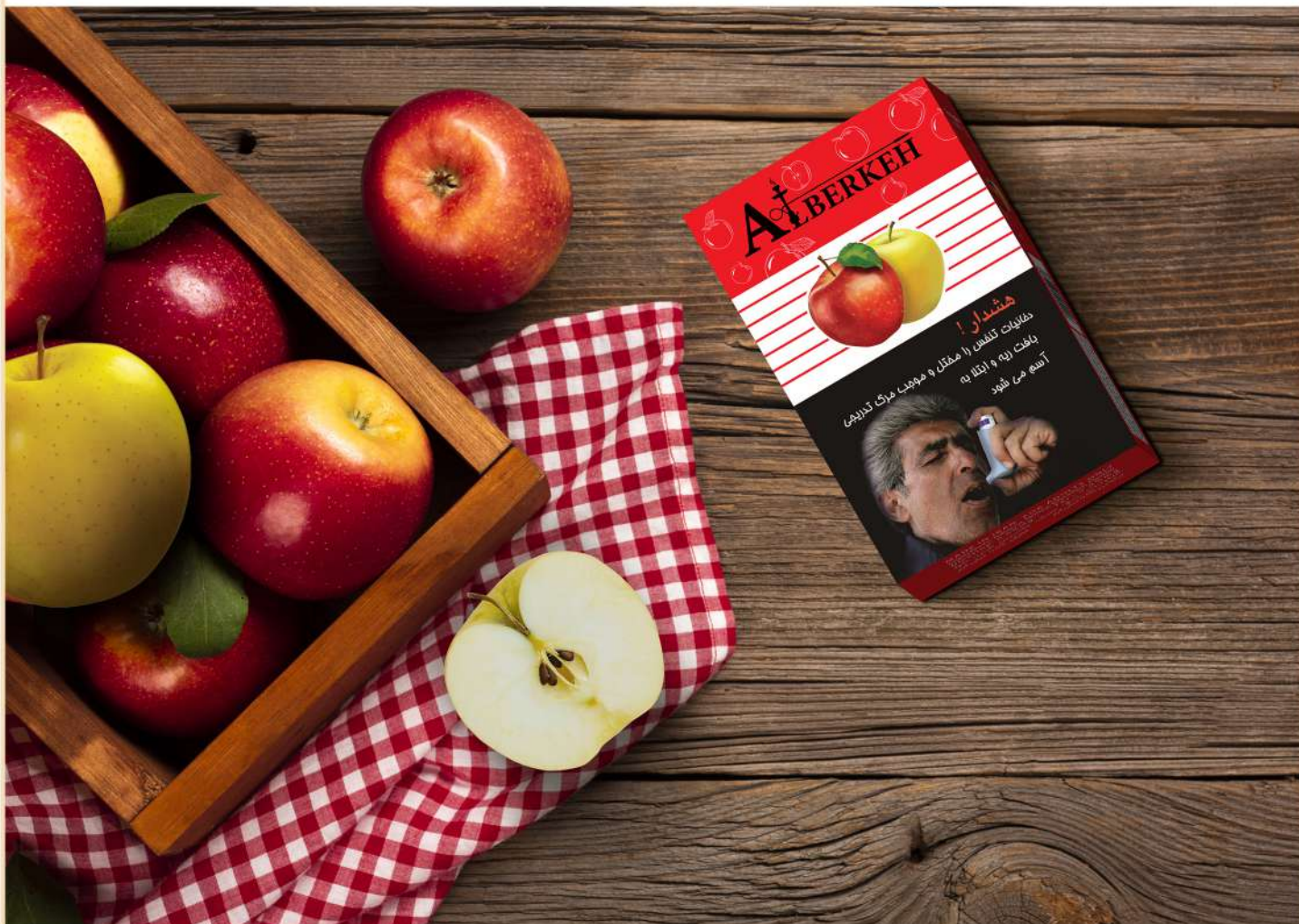
Shisha Flavour



Two Apples Flavour



ALBERKEH
Tobacco



Two Apples Flavour



ALBERKEH
Tobacco



Two Apples with Mint Flavour



AlBERKEH
Tobacco



Iceapple Flavour



A[∞] LBERKEH
Tobacco



Lemon Flavour



ALBERKEH
Tobacco



Lemon with Mint Flavour



AlBERKEH
Tobacco



Cinnamon Flavour



ALBERKEH
Tobacco



Cinnamon with Gum Flavour



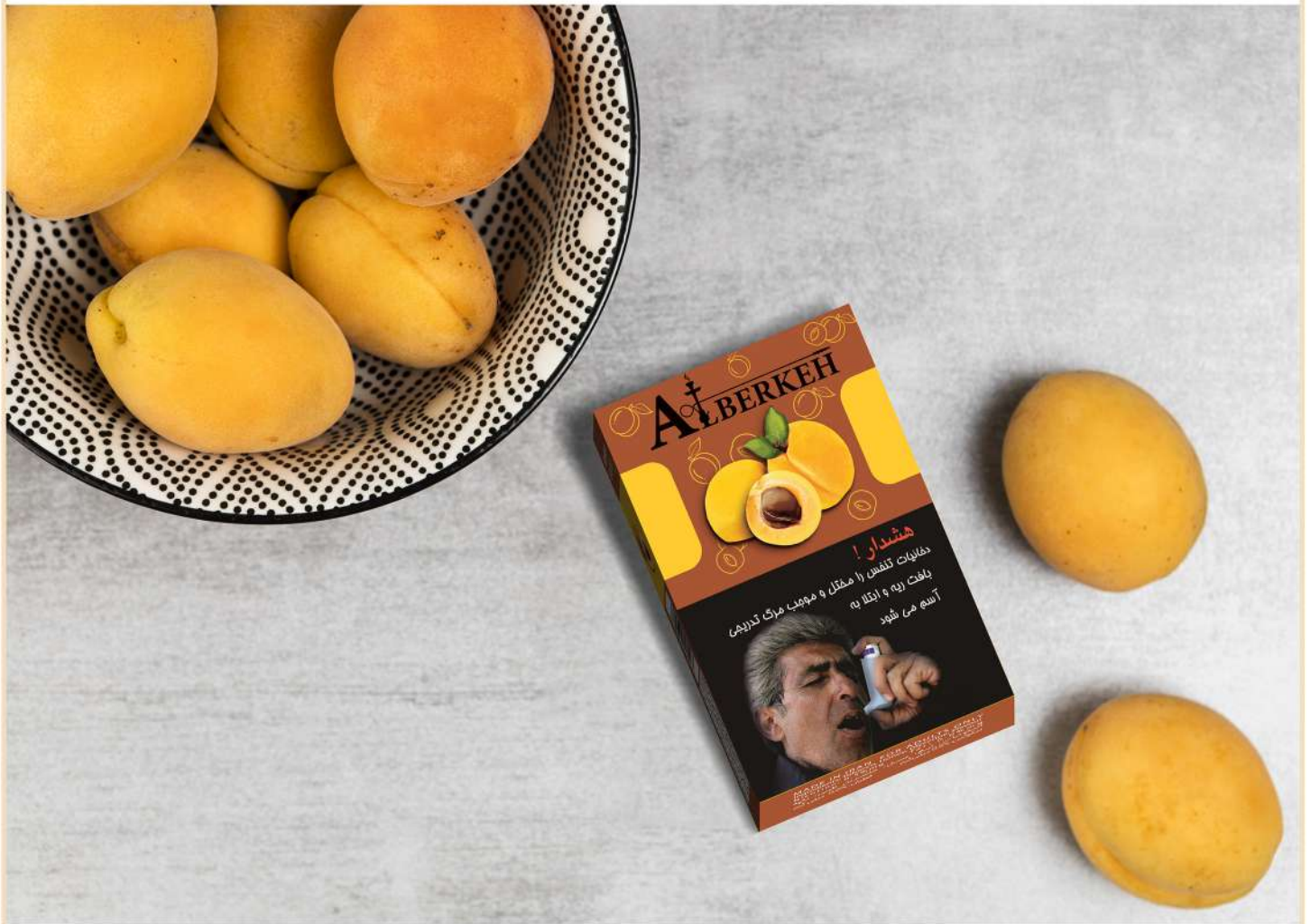
ALBERKEH
Tobacco



Blueberry Flavour



AlBERKEH
Tobacco



Apricot Flavour



ALBERKEH
Tobacco



Bluemiss Flavour



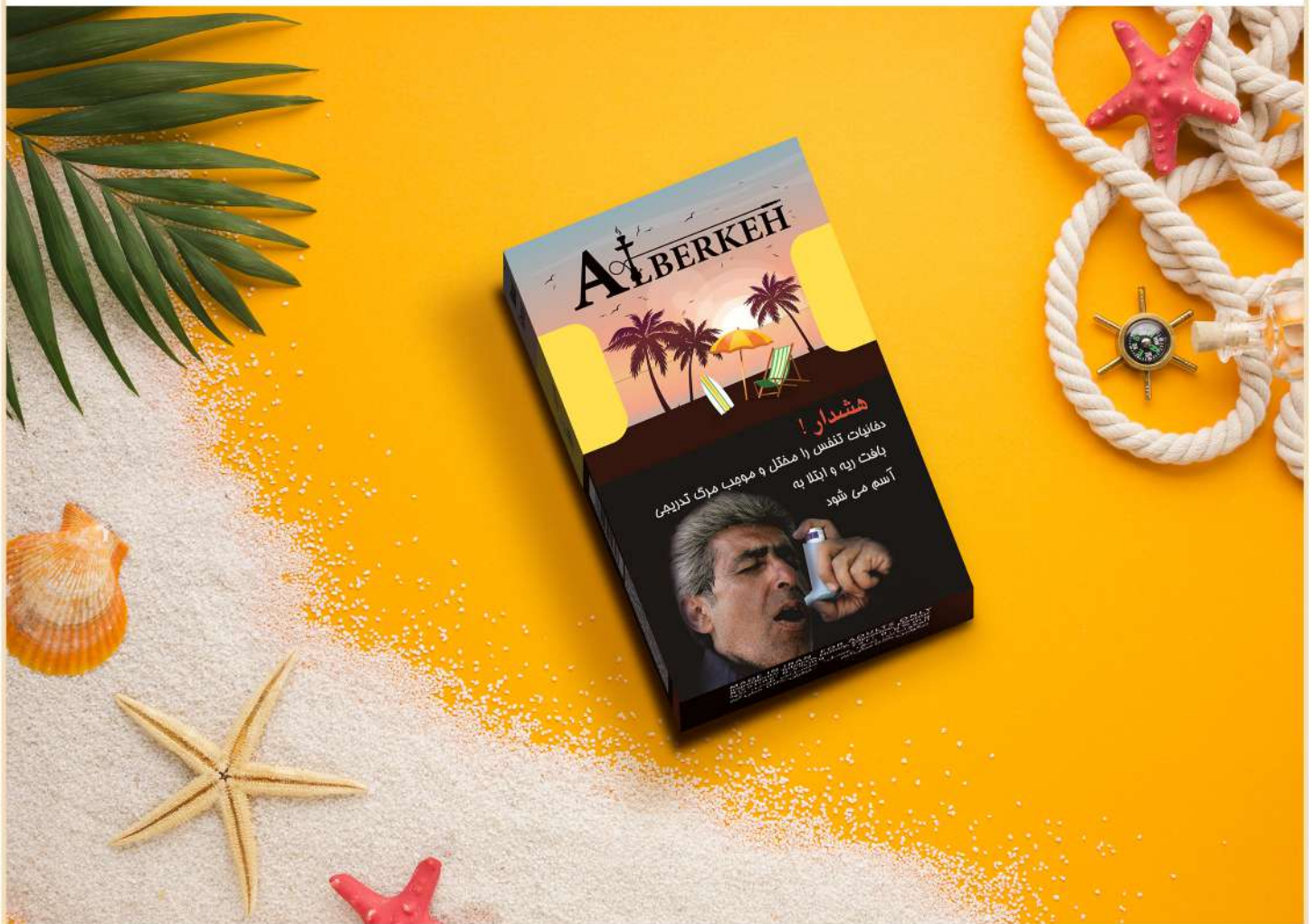
ALBERKEH
Tobacco



Mint Flavour



ALBERKEH
Tobacco



Metal Flavour



ALBERKEH
Tobacco



VIP Flavour



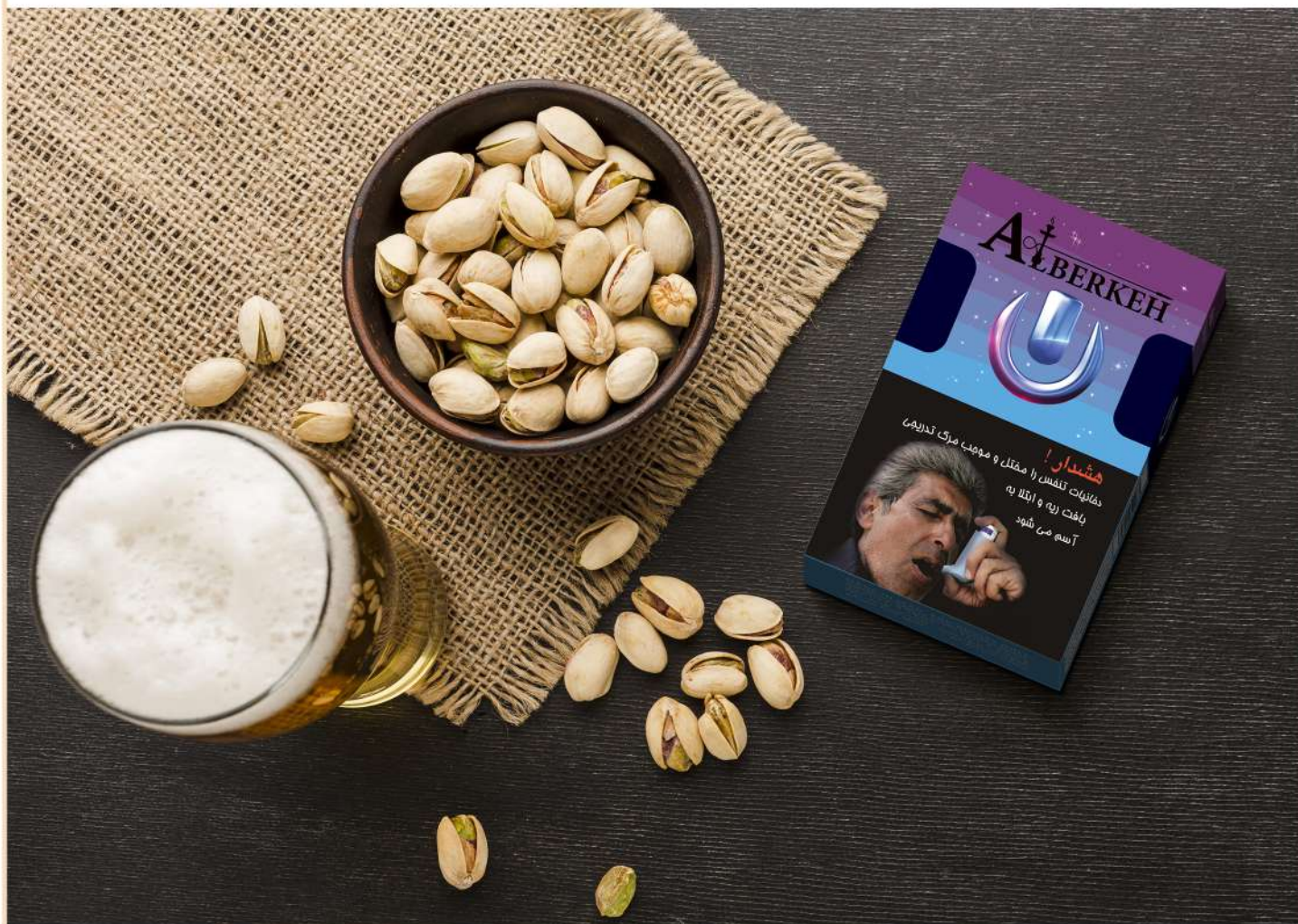
AlBERKEH
Tobacco



Grape Flavour



Al-BERKEH
Tobacco



Ultra Flavour



ALBERKEH
Tobacco



Sour Cherry Flavour



AlBERKEH
Tobacco



Saffron Flavour



Al-BERKEH
Tobacco



Gum with Mint Flavour



ALBERKEH
Tobacco



Mango Flavour



AlBERKEH
Tobacco



Golden Flavour



AlBERKEH
Tobacco



Watermelon with Mint Flavour



ALBERKEH
Tobacco



Gum Flavour



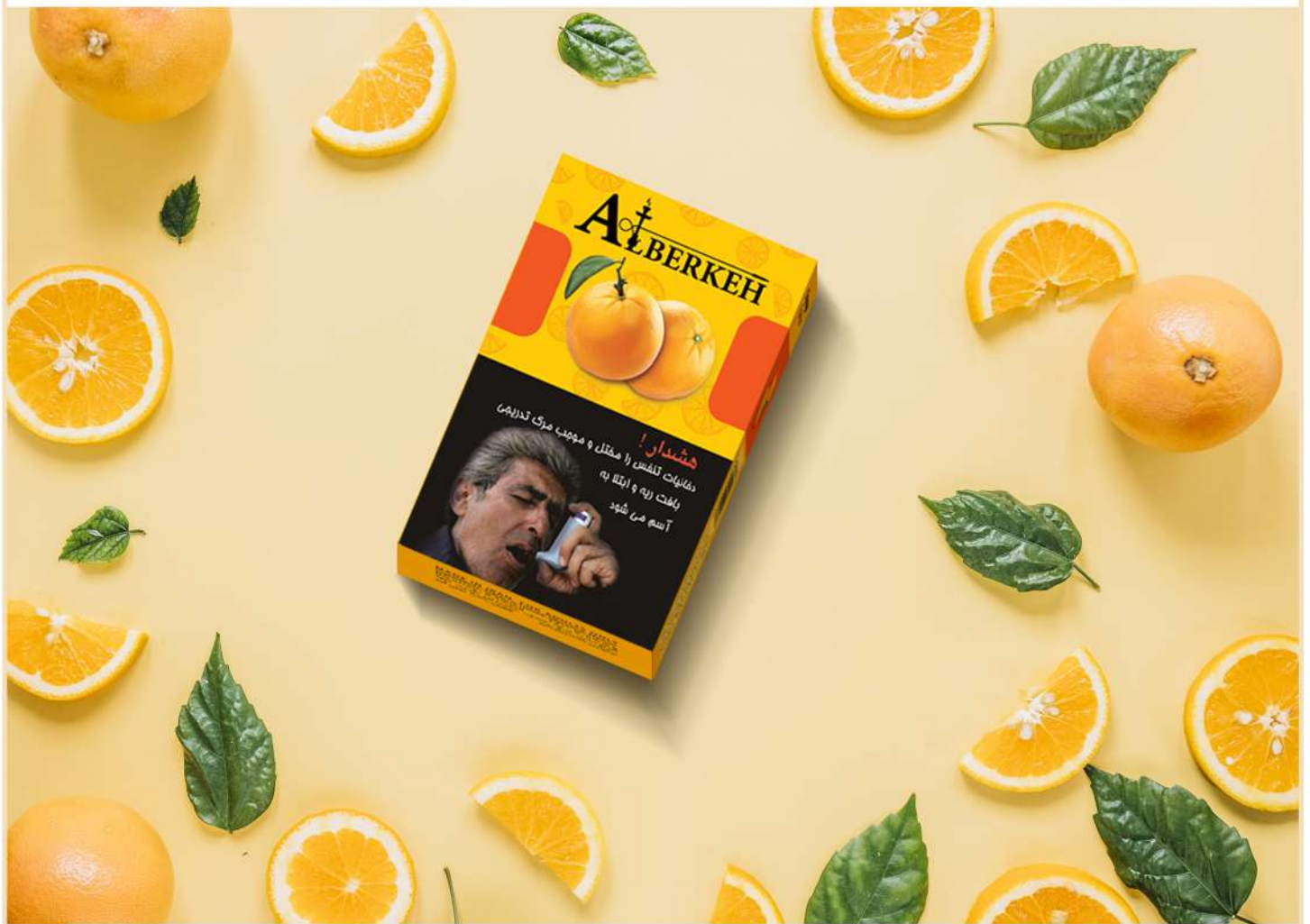
A[∞] LBERKEH
Tobacco



P e a c h F l a v o u r



A[∞] LBERKEH
Tobacco



Orange Flavour



Al-BERKEH
Tobacco



Orange with Mint Flavour



ALBERKEH
Tobacco



Orange with Cream Flavour



ALBERKEH
Tobacco



Toton Arya Middle East

THANK YOU
Molasses Tobacco
A.T Europe GmbH

www.atgermania.com

info@atgermania.com